

NetSmartz®

# Scribbles



NetSmartzKids.org



Clicky



Webster ☆

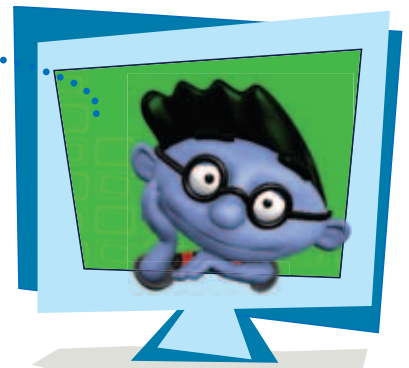
# My Rules for Online Safety

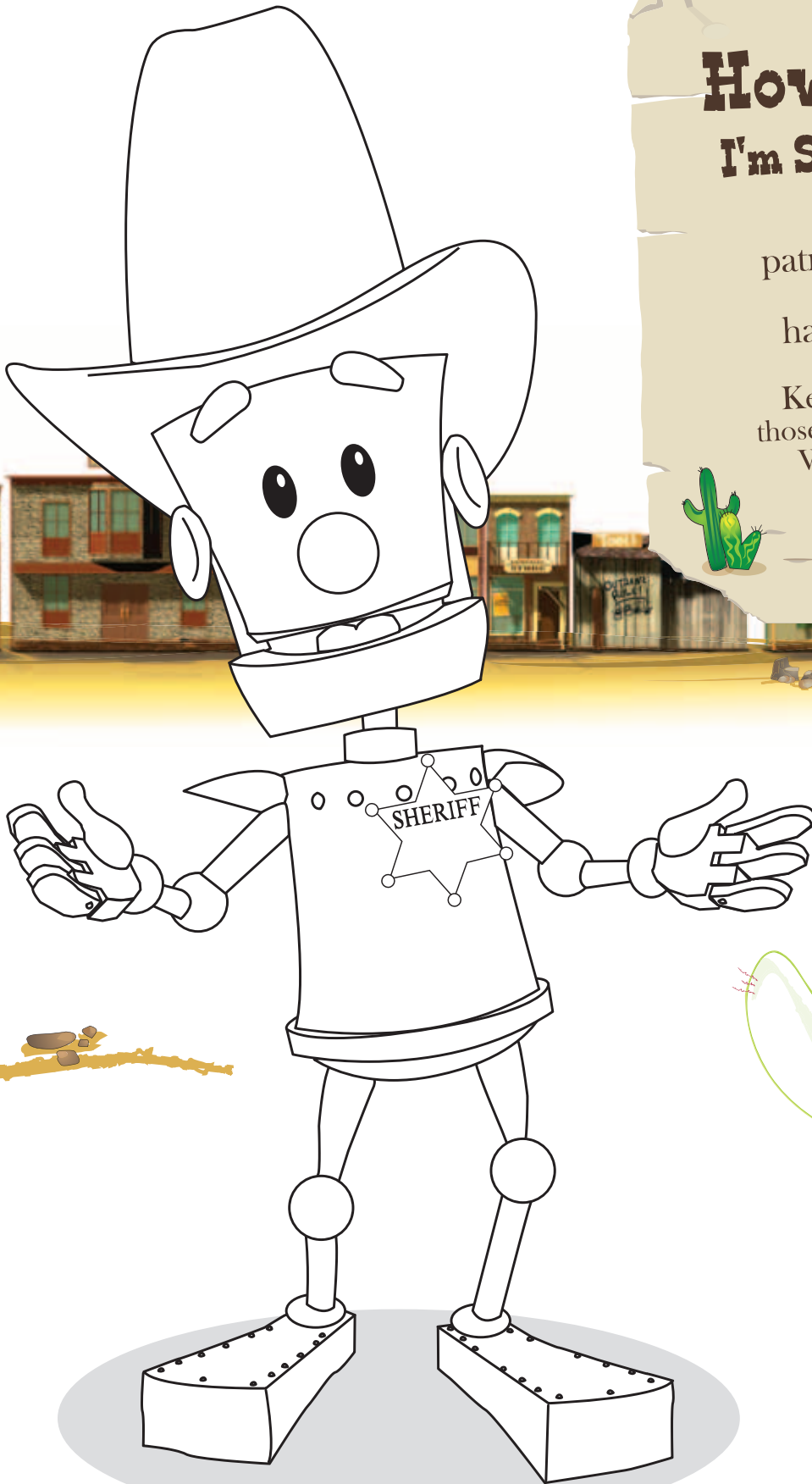
I will tell my trusted adult if anything makes me feel sad, scared, or confused. **1**

I will ask my trusted adult before sharing information like my name, address, and phone number. **2**

I won't meet face-to-face with anyone from the Internet. **3**

I will always use good netiquette and not be rude or mean online. **4**

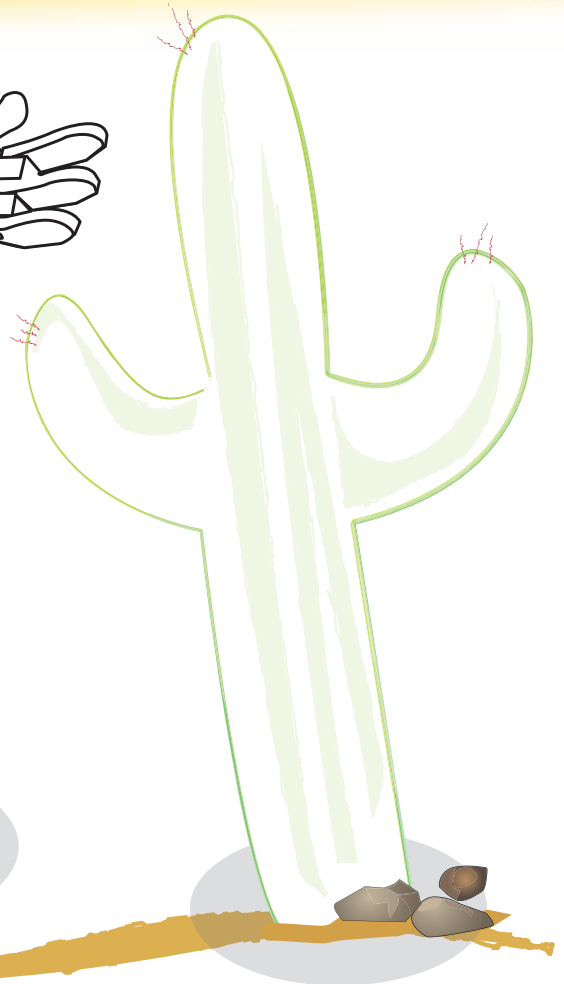




# Howdy kids! I'm Sheriff Clicky.

My job is to  
patrol the Internet  
so you can  
have fun online.

Keep a lookout for  
those pesky varmints—the  
Webville Outlaws!



# Outlaw Round-Up!

Help Sheriff Clicky round up the Outlaws!  
Match the Outlaw to their crime by drawing a line.

Tell me more!



## POTTY-MOUTH PETE

He is a cyberbully and uses mean or bad words online.

Check this out!



## MEET-ME MACK

He tries to meet you in person.

@#%\*^\$&%!



## LOOK-AT-DIS LOUIE

He sends you pictures of things you don't want to see.

See you there?



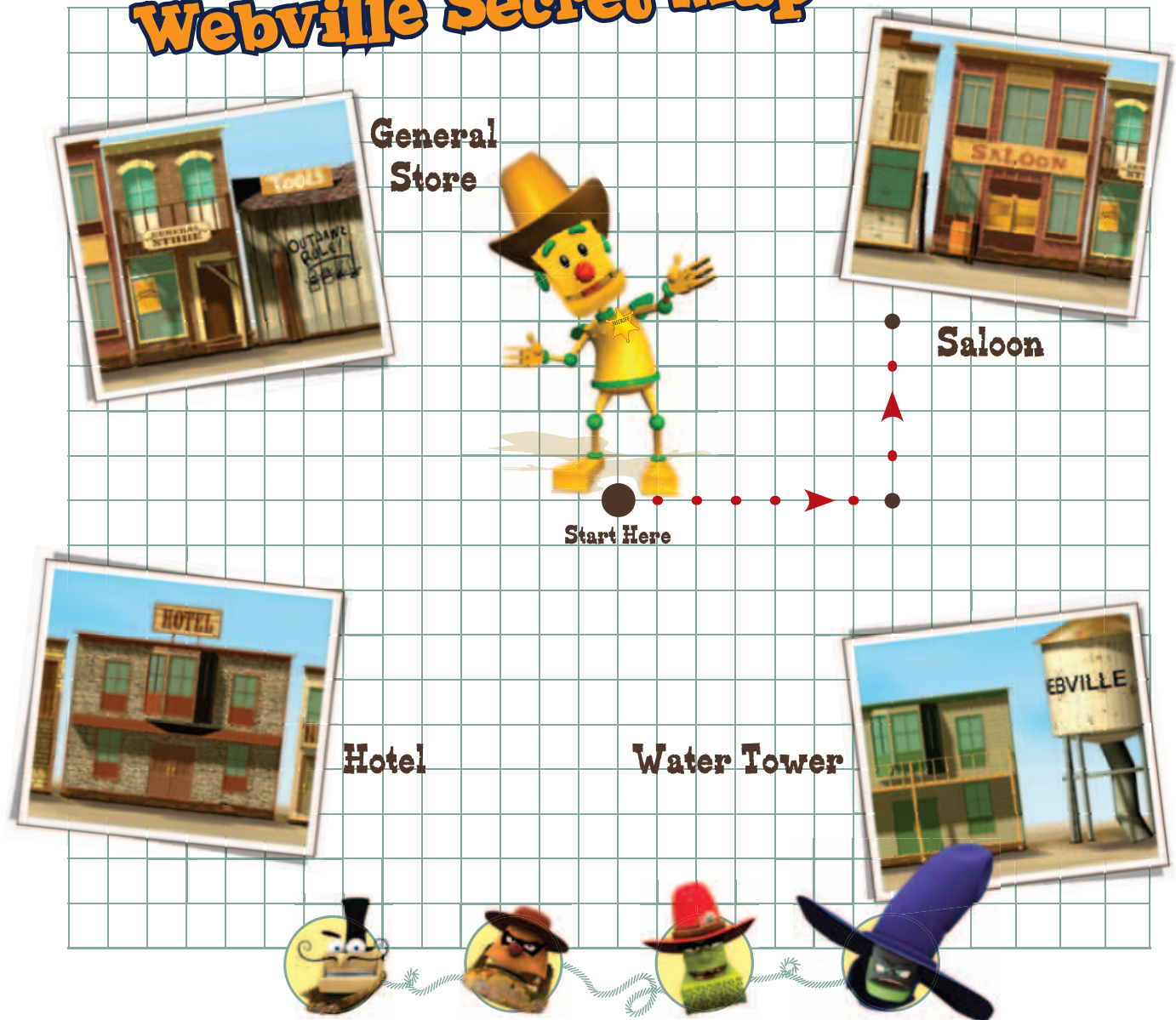
## WANTA-KNOW WALLY

He tries to get your personal information.



Can you help Sheriff Clicky find where the Outlaws are hiding?  
Start from the middle and follow your way around Weville using the clues below.

# Webville Secret Map



1. Go right  $5 + 2 =$  7

5. Go left  $12 - 2 =$  \_\_\_\_\_

2. Go up  $5 - 1 =$  4

6. Go up  $4 + 2 =$  \_\_\_\_\_

3. Go left  $6 - 3 =$  \_\_\_\_\_

7. Go right  $8 - 6 =$  \_\_\_\_\_

4. Go down  $3 + 6 =$  \_\_\_\_\_

8. Go up  $3 + 2 =$  \_\_\_\_\_

**Where are they hiding? Circle the answer on the map!**

# NetSmartz Ad Libs

Complete the story by filling in the blanks with the correct parts of speech!

One day, Sheriff Clicky was \_\_\_\_\_  
(verb ending in -ing)

when he got some terrible news.

The \_\_\_\_\_ Outlaws had broken out of jail  
(adjective)

and were causing trouble for kids online!

He needed to round 'em up quick!



Sheriff Clicky \_\_\_\_\_  
(adverb)

searched all of Webville. He \_\_\_\_\_  
(verb)

the tool shed, the \_\_\_\_\_, and the  
(noun)

hotel. As he passed Stinky's Burger Barn, he

smelled something \_\_\_\_\_  
(adjective)

and knew it must be Potty-Mouth Pete.



**Sheriff Clicky found the Outlaws and put them back in jail where they belong!  
Thanks Sheriff Clicky for making the Internet safer for kids everywhere!**

# Lock 'Em Up!

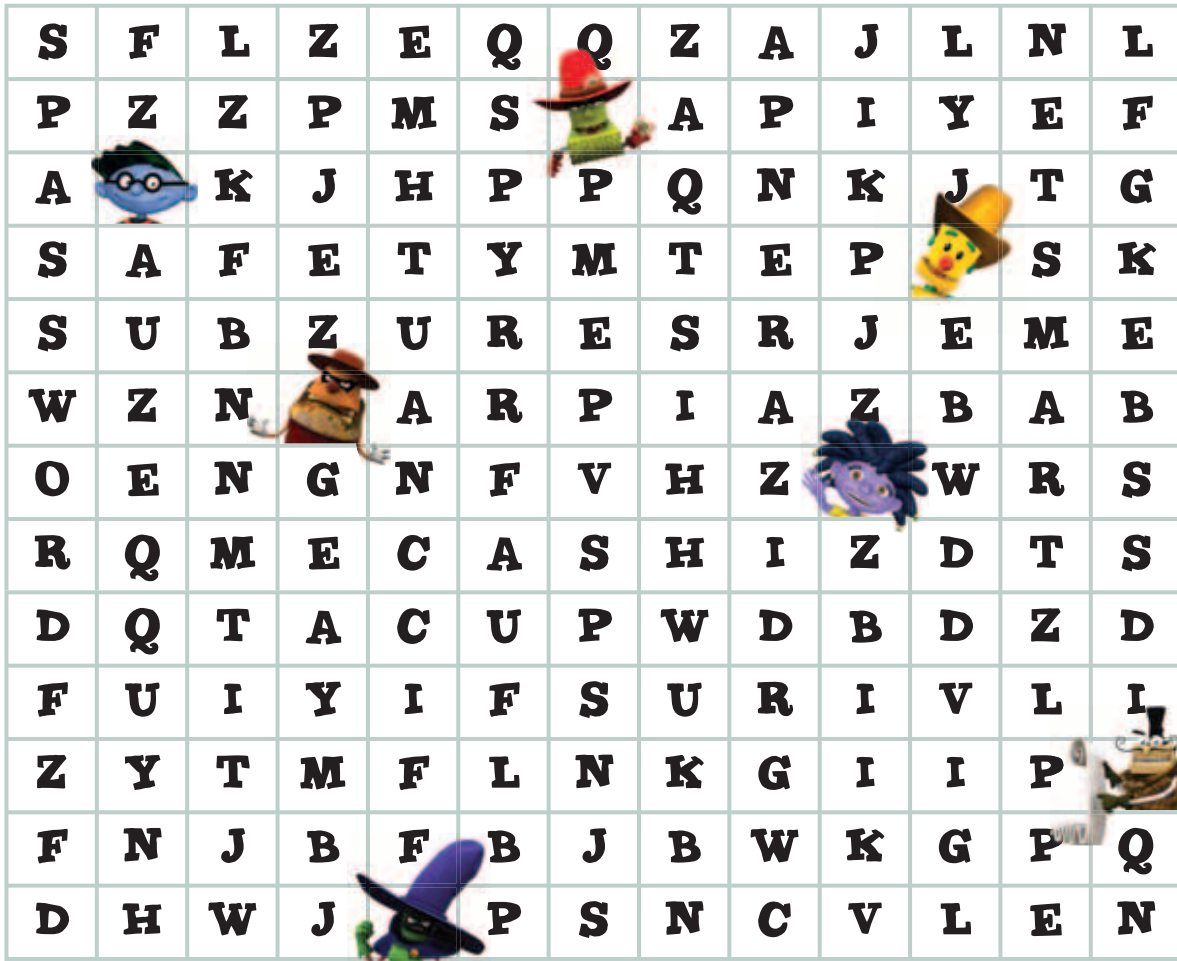
Help Sheriff Clicky find his way through Weville to put the Outlaws in jail!  
(Hint: You'll have to take Sheriff Clicky to all 4 Outlaws before taking them to jail.)





# NetSmartz Wordsearch

As you look for hidden words, remember that they can be horizontal, vertical, or diagonal—frontward or backward! Circle the word once you find it! Good luck!



**NETSMARTZ** kids care about **SAFETY** on the **INTERNET!** Protect your **PRIVACY** and create a strong **PASSWORD.**

Don't open an **E-MAIL** from someone you don't know—it could have a **VIRUS.**

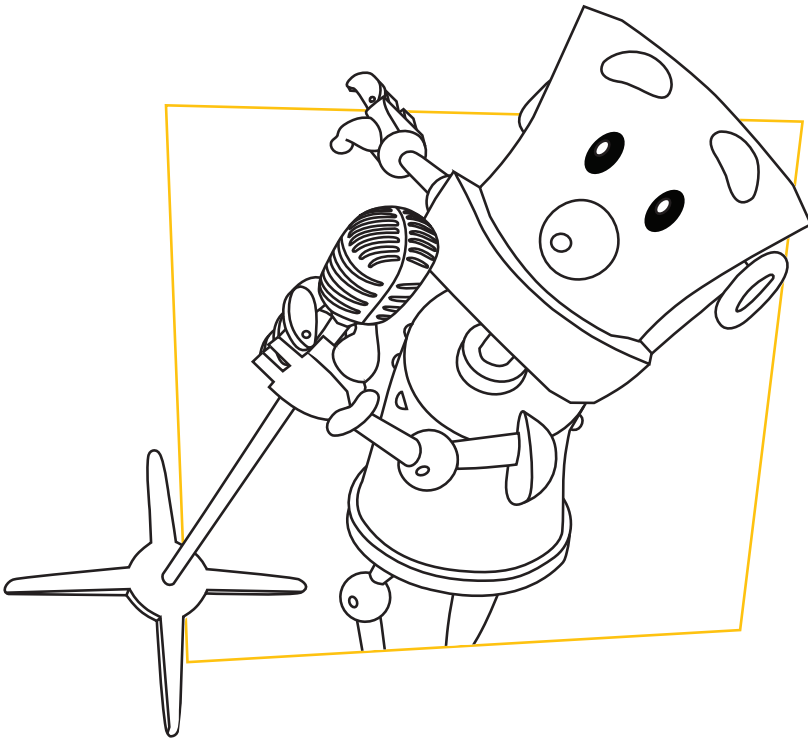
**UYN!**



# Crack the Code!

Use the decoder key to fill in the letters of the characters' names and the safety message.  
Then you can **COLOR** the characters.

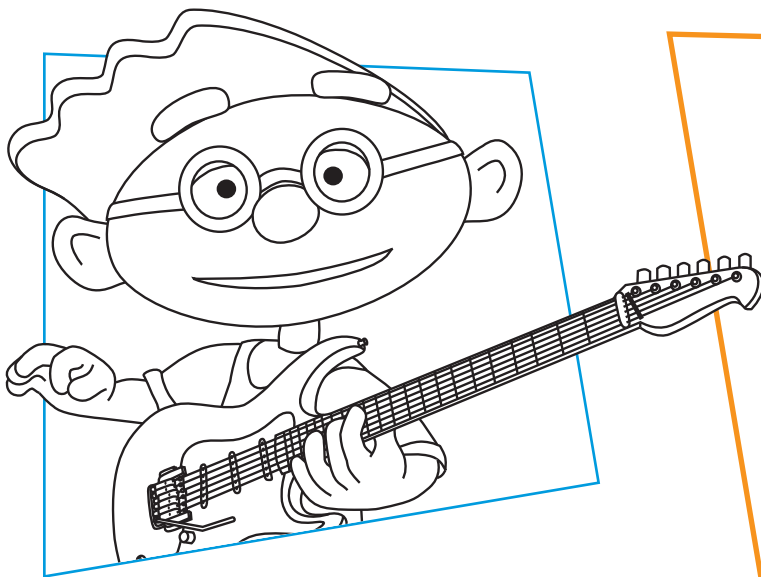
<b>S</b>	<b>O</b>	<b>K</b>	<b>F</b>	<b>R</b>	<b>E</b>	<b>Y</b>	<b>W</b>	<b>A</b>	<b>B</b>	<b>T</b>	<b>I</b>	<b>N</b>	<b>L</b>	<b>C</b>
<b>1</b>	<b>2</b>	<b>3</b>	<b>4</b>	<b>5</b>	<b>6</b>	<b>7</b>	<b>8</b>	<b>9</b>	<b>10</b>	<b>11</b>	<b>12</b>	<b>13</b>	<b>14</b>	<b>15</b>



15 14 12 15 3 7



13 6 11 11 12 6



8 6 10 1 11 6 5

## Safety Message

1 11 9 7

1 9 4 6 5

2 13 14 12 13 6 **!!**

# What's Different?

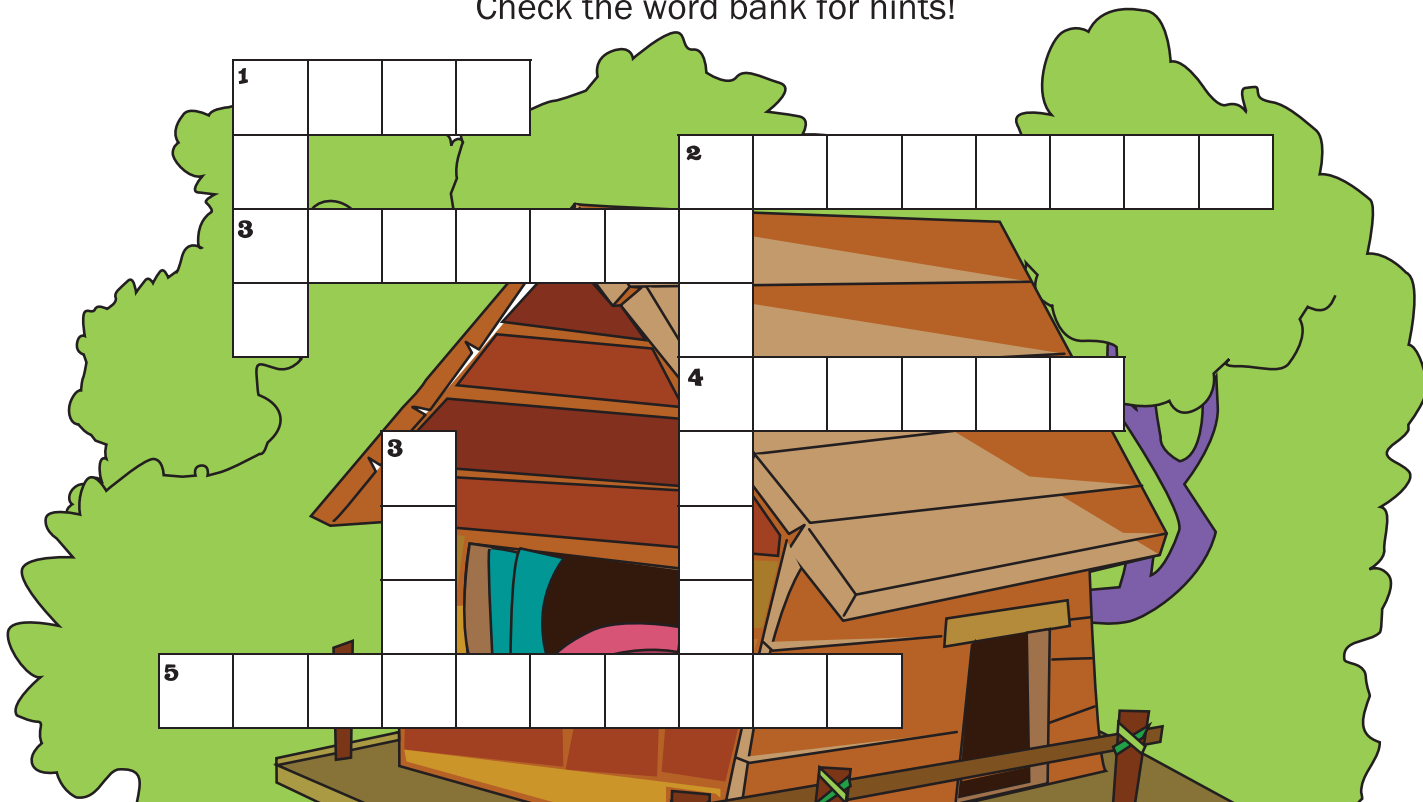
Circle 6 things that are different about the second picture!



# NetSmartz Crossword

Complete the crossword by filling in the word that fits each clue.

Check the word bank for hints!



## Across

- Unwanted e-mail from someone you don't know, usually trying to sell you something.
- The secret code you use to sign onto a website. Only tell your parent or guardian.
- Meet-Me Mack tries to meet you \_\_\_\_\_.
- My rules for online \_\_\_\_\_.
- Potty-Mouth Pete is a \_\_\_\_\_.

## Down

- Look-At-Dis Louie tries to \_\_\_\_\_ you things you don't want to see.
- Wanta-Know Wally tries to collect your \_\_\_\_\_ information.
- Never give out your \_\_\_\_\_, age, or phone number to others online.

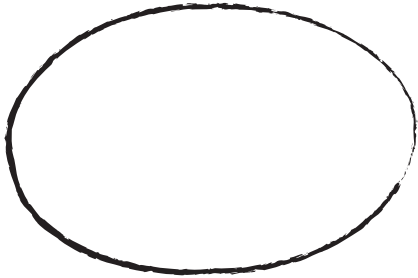
## WORD BANK :

**NAME      CYBERBULLY      OFFLINE      PASSWORD**  
**PERSONAL      SAFETY      SHOW      SPAM**

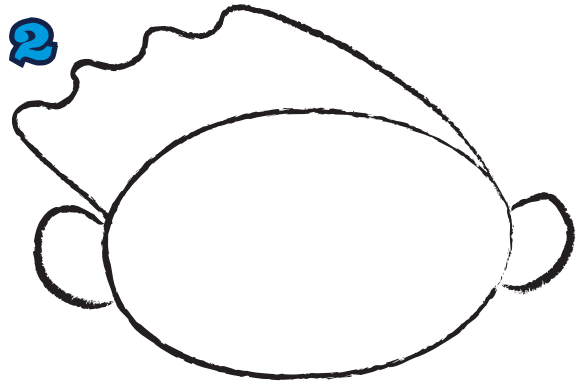
# Learn to Draw Webster!

Learn to draw Webster! Follow the steps so you can be a NetSmartz artist!

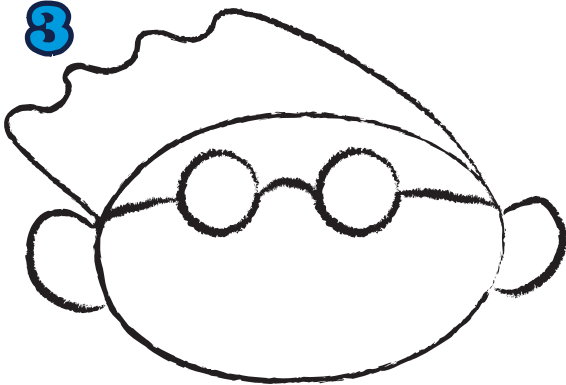
1



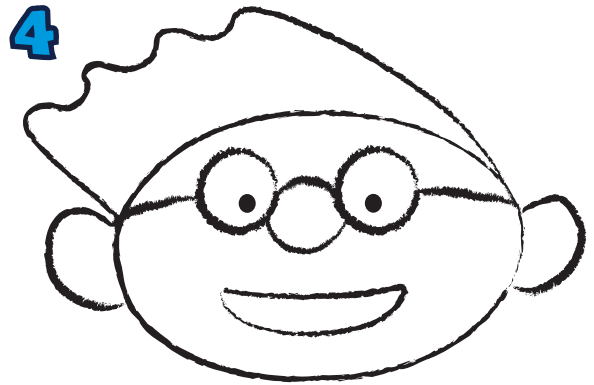
2



3



4



5





# My Rules for Real-World Safety

I will always check first with my parent, guardian, or other trusted adult before going anywhere, helping anyone, accepting anything, or getting into a car. **1**

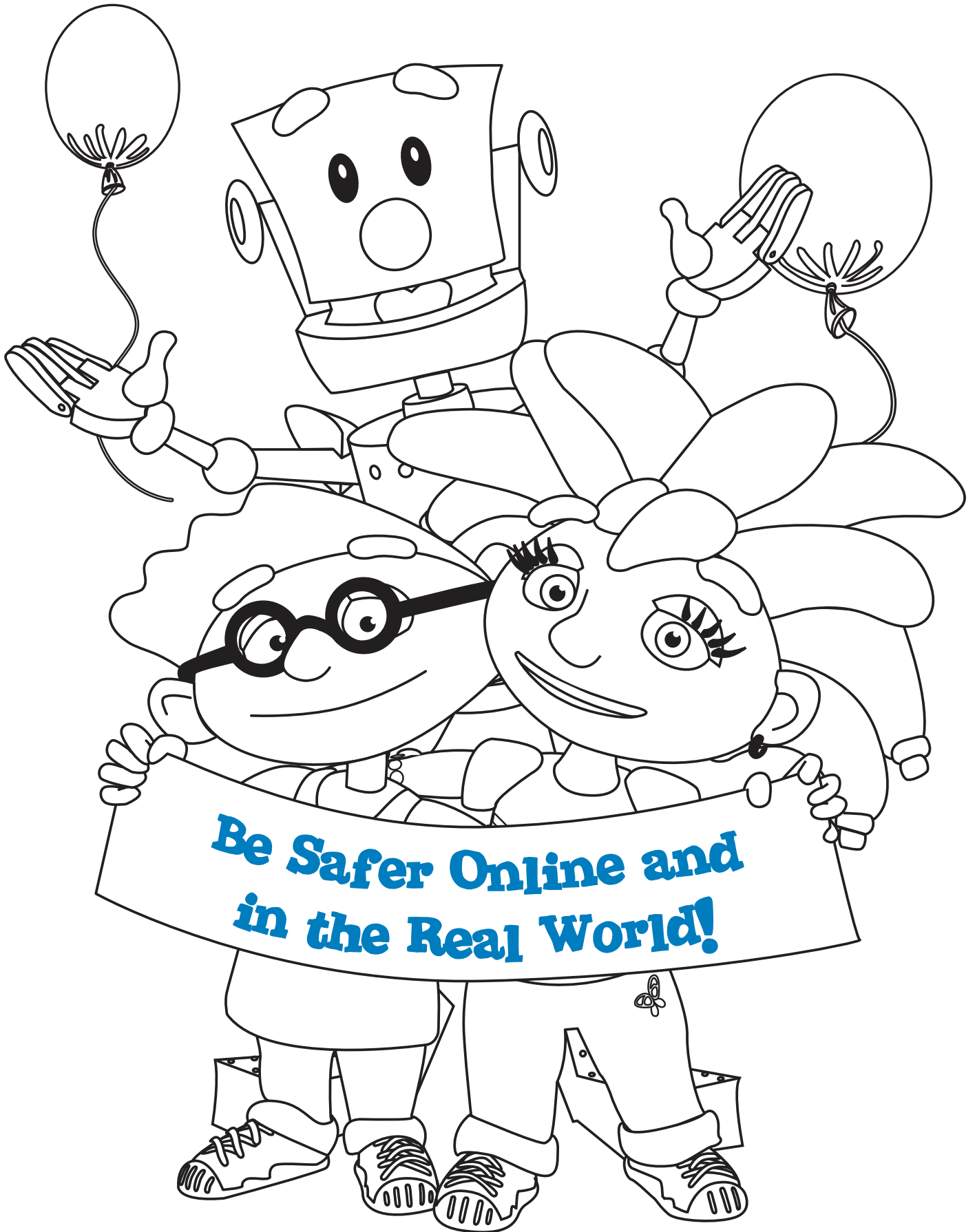


I will take a friend with me when going places or playing outside. **2**

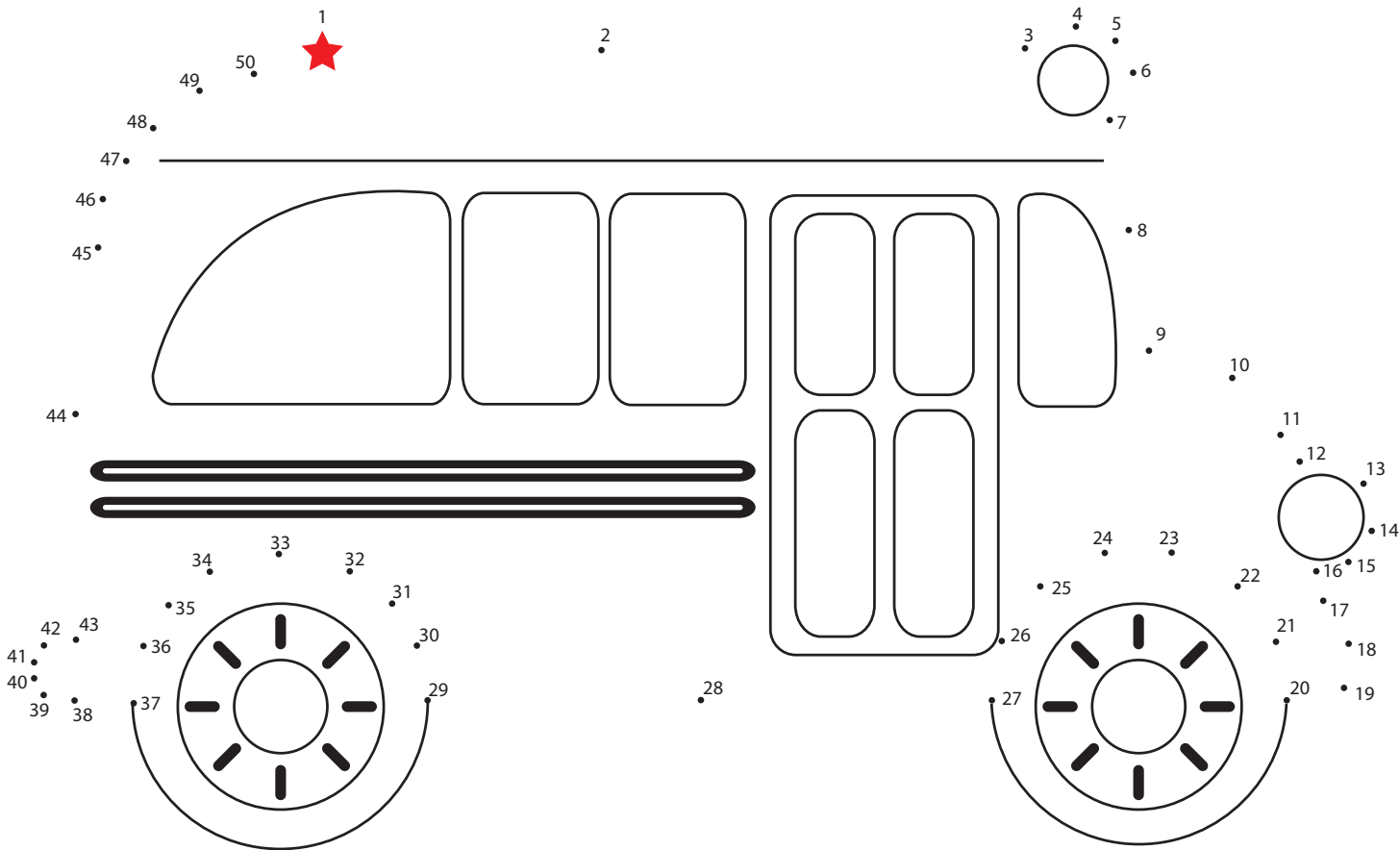
I will tell people "NO" if they try to touch or hurt me. It's OK for me to stand up for myself. **3**

I will tell my trusted adult if anything makes me feel sad, scared, or confused. **4**





# Connect the Dots!



Remember the  
**4 Real-World Safety Rules**  
when you're at the  
**bus stop!**



# Neighborhood Maze!

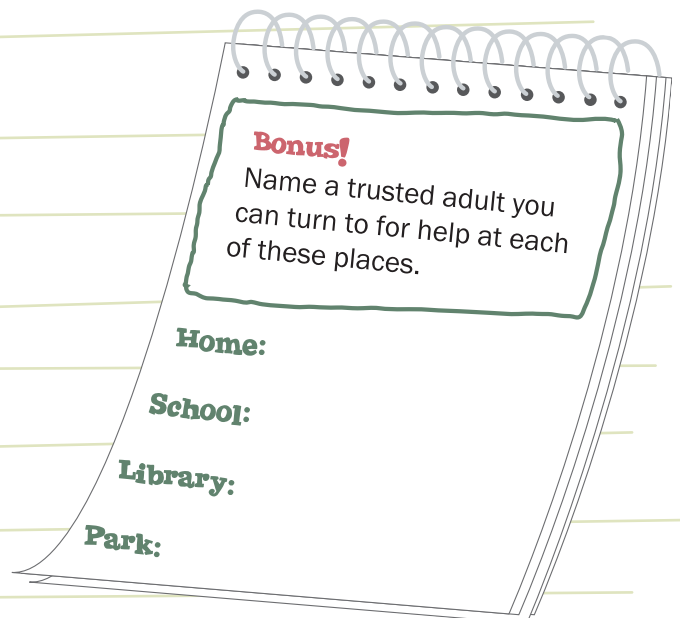
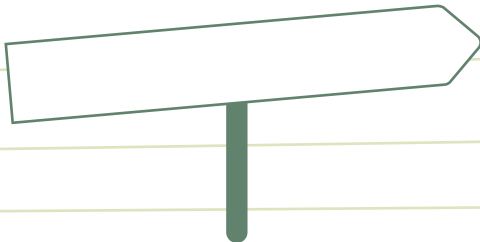
Where are Nettie and Webster going? Follow the directions to find out.



## Directions:

1. Start out going north on Main Street.
2. Turn east on Web Way.
3. Go north on Clicky Creek Road.
4. Head west on Router Road.
5. Turn south on Main Street.
6. Go west on Chowder Lane.
7. Turn north on UYN Lane. **STOP!**

## Where did Nettie and Webster go?





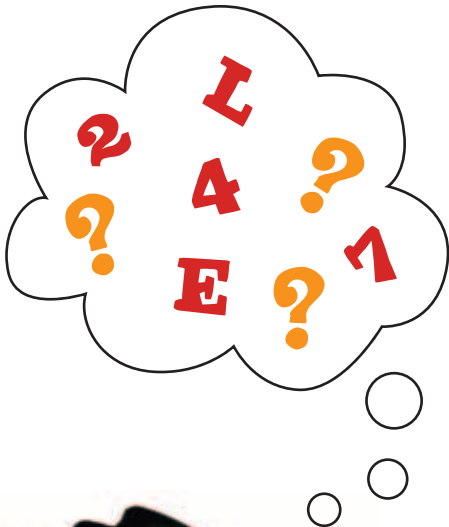
# Tell People "NO!"

If someone tries to get you to go anywhere or touch you in a way that makes you feel *scared*, *uncomfortable*, or *confused*, tell them **"NO!"** in a loud voice and tell a trusted adult, because **it's OK** for you to stand up for yourself!



# NetSmartz Math Decoder

Can you figure out Webster's secret message?  
Solve the math equations to find the letters in the message. Good luck!



2	8	5	1	10
+2	-1	-3	+1	-5
<input style="width: 30px; height: 20px;" type="text" value="4"/>	<input style="width: 30px; height: 20px;" type="text"/>	<input style="width: 30px; height: 20px;" type="text"/>	<input style="width: 30px; height: 20px;" type="text"/>	<input style="width: 30px; height: 20px;" type="text"/>
<b>T</b>	—	—	—	—

8	4	2	6	10	5	3
-4	-3	+1	+4	-6	+2	+3
<input style="width: 30px; height: 20px;" type="text"/>	<input style="width: 30px; height: 20px;" type="text"/>	<input style="width: 30px; height: 20px;" type="text"/>	<input style="width: 30px; height: 20px;" type="text"/>	<input style="width: 30px; height: 20px;" type="text"/>	<input style="width: 30px; height: 20px;" type="text"/>	<input style="width: 30px; height: 20px;" type="text"/>
—	—	—	—	—	—	—

6	3	7	8	9
-1	+3	-4	-6	-5
<input style="width: 30px; height: 20px;" type="text"/>	<input style="width: 30px; height: 20px;" type="text"/>	<input style="width: 30px; height: 20px;" type="text"/>	<input style="width: 30px; height: 20px;" type="text"/>	<input style="width: 30px; height: 20px;" type="text"/>
—	—	—	—	—!

<b>R</b>	<b>S</b>	<b>T</b>	<b>E</b>	<b>L</b>	<b>A</b>	<b>D</b>	<b>U</b>
<b>1</b>	<b>10</b>	<b>4</b>	<b>7</b>	<b>2</b>	<b>5</b>	<b>6</b>	<b>3</b>

# My Trusted Adults!

If anything happens that makes you feel scared, uncomfortable, or confused, tell a trusted adult! Who are your trusted adults?

**Name:**

**Phone Number:**

**Name:**

**Phone Number:**

**Name:**

**Phone Number:**

# Nettie's Secret Message

Unscramble the letters to find Nettie's secret message!

When going places or

L G A I Y P N outside,

K E A T a

N F D E I R!



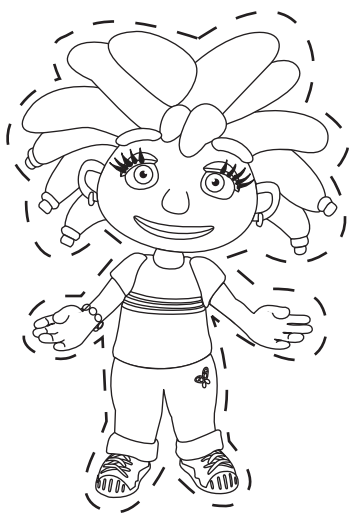
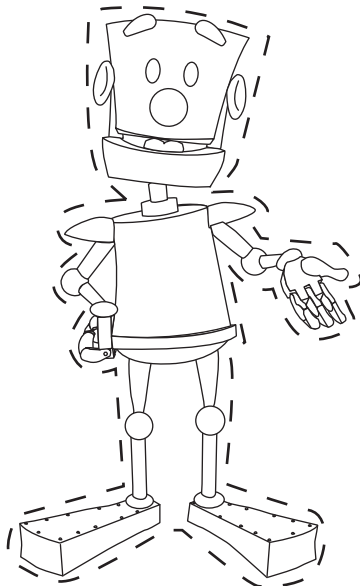


# Make a Scene!

Copy, cut, and paste the NetSartz characters in the scene below, then write a caption to go along with your picture.



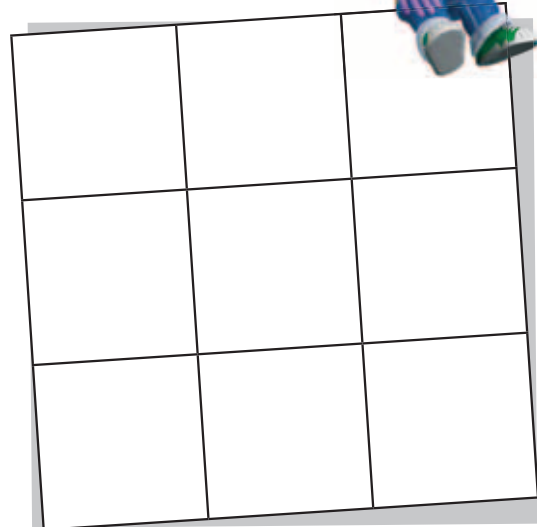
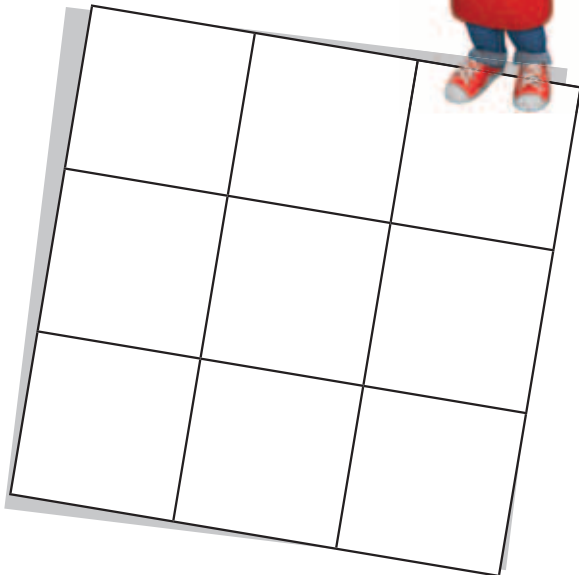
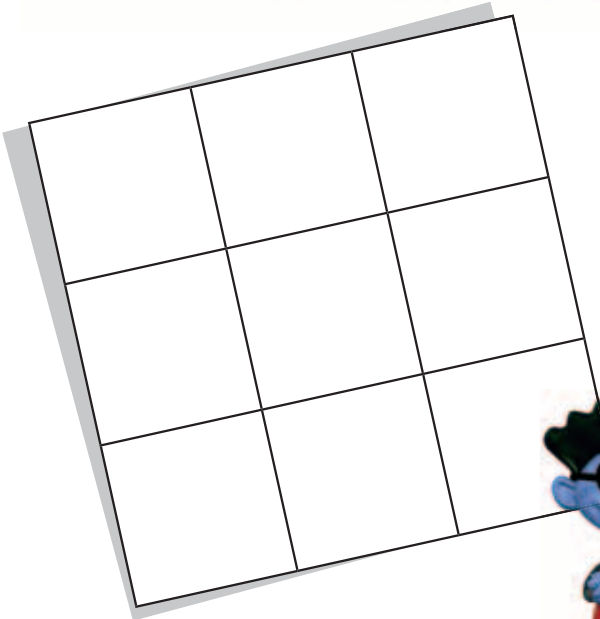
(Write caption here.)



# Tic-Tac-Toe



"Check first with your parent or guardian before going anywhere!"



# Complete the Lyrics!

Can you fill in the blanks to complete the song?  
Use the word bank if you need clues.



**FIRST,**

**TAKE A**



**TELL PEOPLE**



**!**



**A TRUSTED ADULT.**

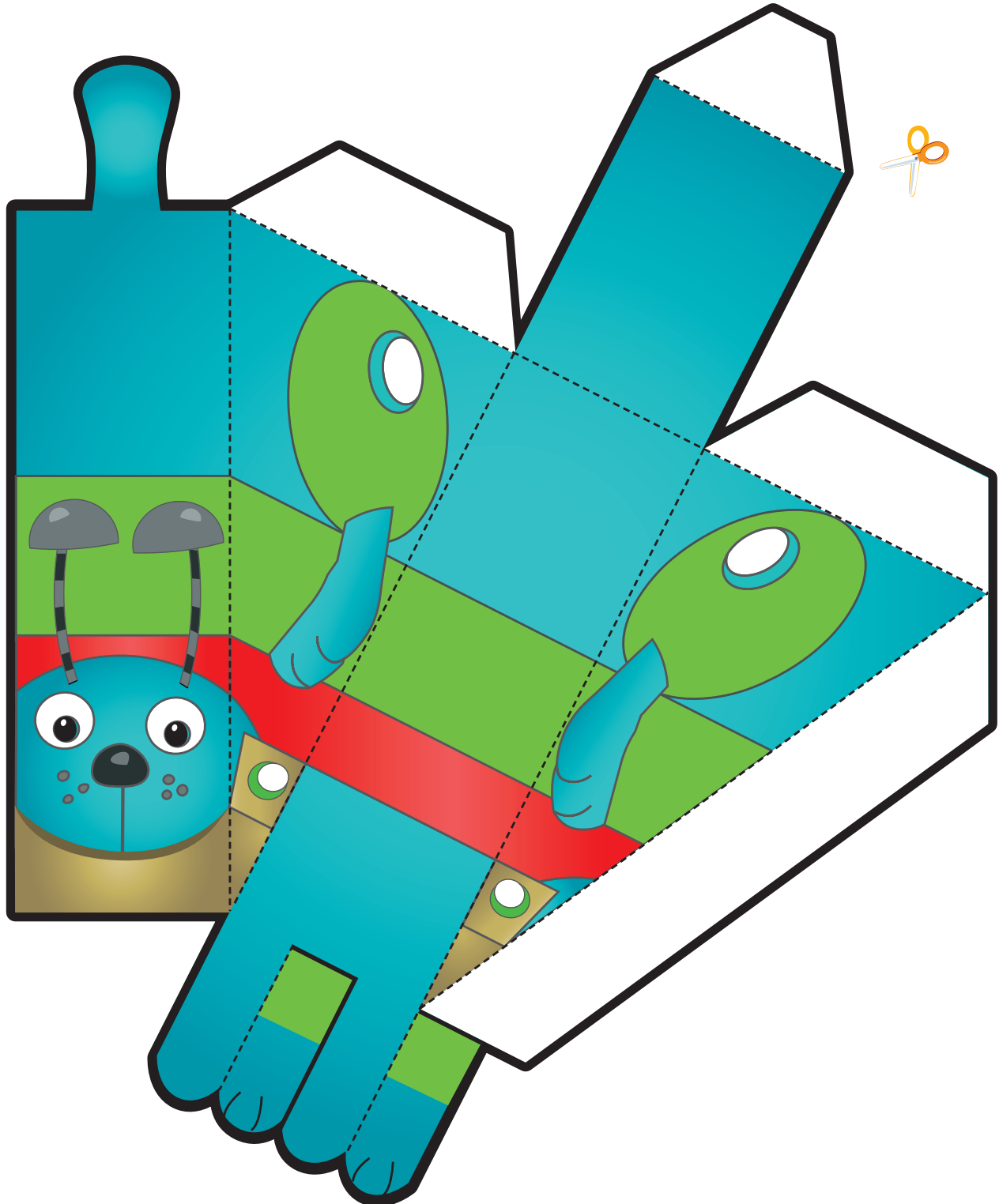
**Now you're ready to go!**

**WORD BANK :**

**GO NO ADULT FRIEND CHECK TELL CHILD FISH**

# Rockin' Router Toys

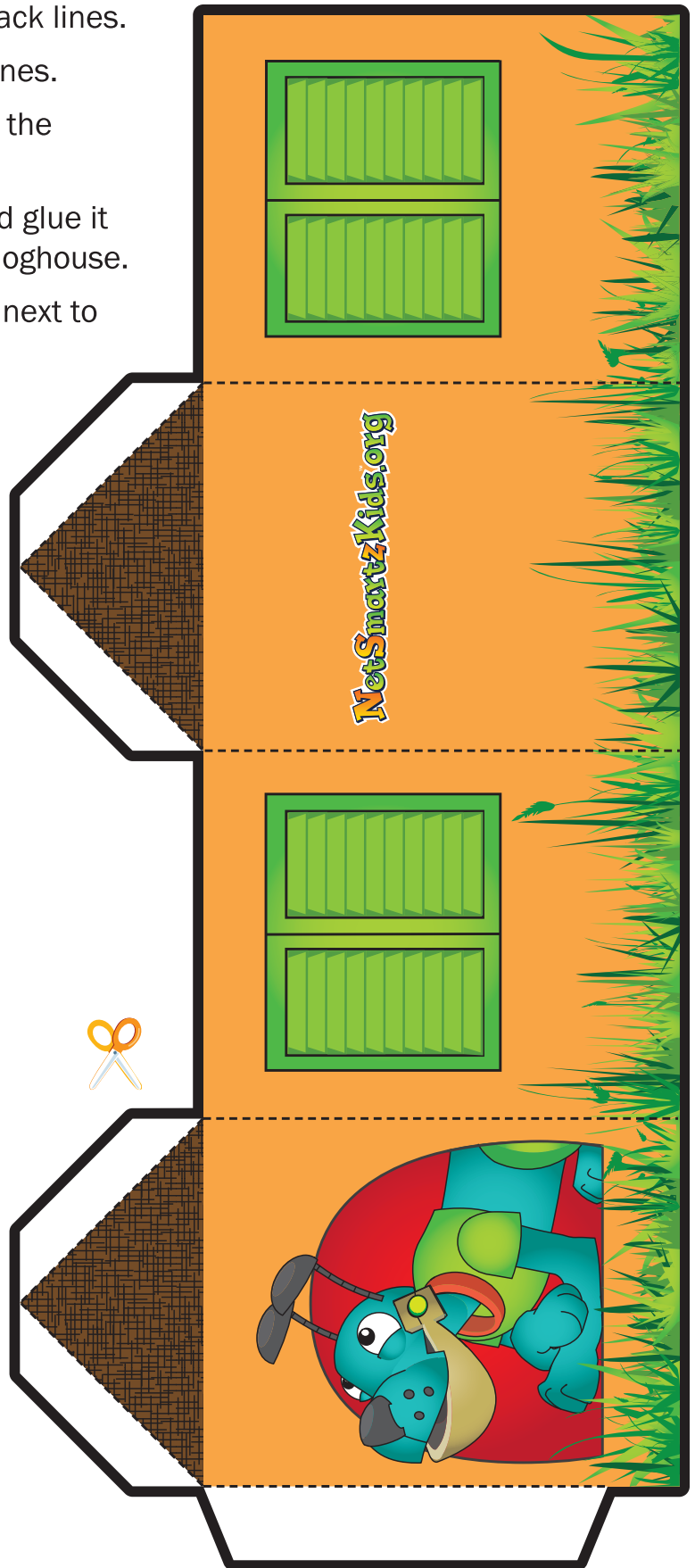
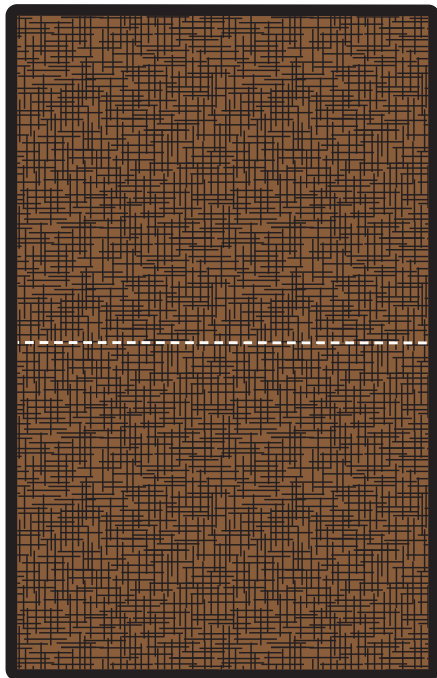
1. Cut out Router along the solid black lines. (Hint: Don't forget his paw!)
2. Fold ALL the dotted lines, but don't glue anything together yet!
3. Fold him up so all the white tabs are inside. (Hint: He should look like a big triangle!)
4. Now glue the colored tabs onto the white tabs. You're done!





# Rockin' Router Toys

1. Cut out all 3 pieces along the solid black lines.
2. Fold the doghouse along the dotted lines.
3. Glue the long white tab inside to hold the doghouse together.
4. Fold the roof along the dotted line and glue it to the small white tabs on top of the doghouse.
5. Write a caption for Router and glue it next to him on the doghouse. You're done!



# Test your safety “smartz” with NetSmartz Scribblez!

NetSmartz Scribblez  
is packed with all kinds of awesome activities  
that help you to be safer online and in the real world.  
You’ll have a blast as Clicky, Nettie, and Webster teach you  
how to UYN – Use Your NetSmartz!



**coloring pages • mazes • puzzles • games**

**For more fun, visit the  
NetSmartz Neighborhood online!**

**NetSmartzKids.org**



# Outlaw Round-Up!

Help Sheriff Clicky round up the Outlaws!  
Match the Outlaw to their crime by drawing a line.

**Tell me more!**

**Check this out!**

**@#%\*@\$&!;**

**See you there?**

**POTTY-MOUTH PETE**  
He is a cyberbully and uses mean or bad words online.

**MEET-ME MACK**  
He tries to meet you in person.

**LOOK-AT-DIS LOUIE**  
He sends you pictures of things you don't want to see.

**WANTA-KNOW WALLY**  
He tries to get your personal information.

Can you help Sheriff Clicky find where the Outlaws are hiding?  
Start from the middle and follow your way around Webville using the clues below.

# Webville Secret Map

**General Store**

**Saloon**

**Hotel**

**Water Tower**

Start Here

- Go right  $5 + 2 = \underline{7}$
- Go up  $5 - 1 = \underline{4}$
- Go left  $6 - 3 = \underline{3}$
- Go down  $3 + 6 = \underline{9}$
- Go left  $12 - 2 = \underline{10}$
- Go up  $4 + 2 = \underline{6}$
- Go right  $8 - 6 = \underline{2}$
- Go up  $3 + 2 = \underline{5}$

Where are they hiding? Circle the answer on the map!

# NetSmartz Ad Libs

Complete the story by filling in the blanks with the correct parts of speech!

One day, Sheriff Clicky was **RUNNING** (verb ending in -ing) when he got some terrible news.

The **SMELLY** (adjective) Outlaws had broken out of jail and were causing trouble for kids online!

He needed to round 'em up quick!

Sheriff Clicky **QUICKLY** (adverb) searched all of Webville. He **SNIFFED** (verb) the tool shed, the **STORE** (noun), and the hotel. As he passed Stinky's Burger Barn, he smelled something **STINKY** (adjective) and knew it must be Potty-Mouth Pete.

**Sheriff Clicky found the Outlaws and put them back in jail where they belong! Thanks Sheriff Clicky for making the Internet safer for kids everywhere!**

# Lock 'Em Up!

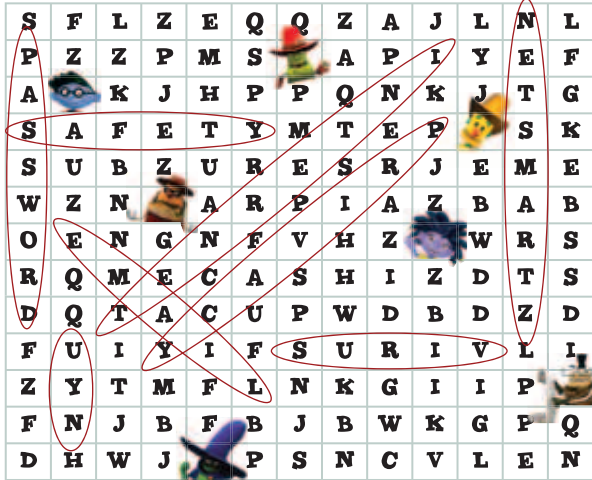
Help Sheriff Clicky find his way through Webville to put the Outlaws in jail!  
(Hint: You'll have to take Sheriff Clicky to all 4 Outlaws before taking them to jail.)

**Start**



# NetSmartz Wordsearch

As you look for hidden words, remember that they can be horizontal, vertical, or diagonal—frontward or backward! Circle the word once you find it! Good luck!



**NETSMARTZ** kids care about **SAFETY** on the **INTERNET!** Protect your **PRIVACY** and create a strong **PASSWORD.** Don't open an **E-MAIL** from someone you don't know—it could have a **VIRUS.**

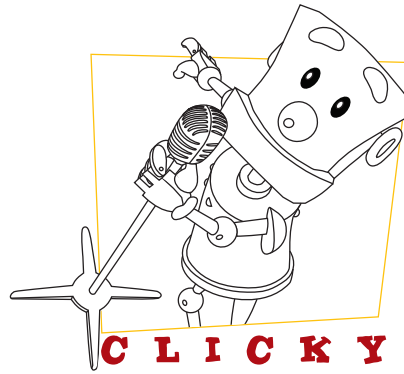
**UYN!**

Copyright © 2009 National Center for Missing & Exploited Children. All rights reserved.

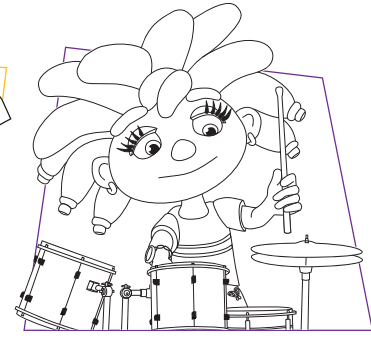
# Crack the Code!

Use the decoder key to fill in the letters of the characters' names and the safety message. Then you can **COLOR** the characters.

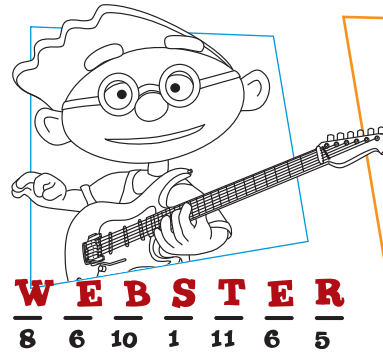
S	O	K	F	R	E	Y	W	A	B	T	I	N	L	C
1	2	3	4	5	6	7	8	9	10	11	12	13	14	15



**C L I C K Y**  
15 14 12 15 3 7



**N E T T I E**  
13 6 11 11 12 6



**W E B S T E R**  
8 6 10 1 11 6 5

## Safety Message

**S T A Y**  
1 11 9 7

**S A F E R**  
1 9 4 6 5

**O N L I N E!**  
2 13 14 12 13 6

Copyright © 2009 National Center for Missing & Exploited Children. All rights reserved.

# What's Different?

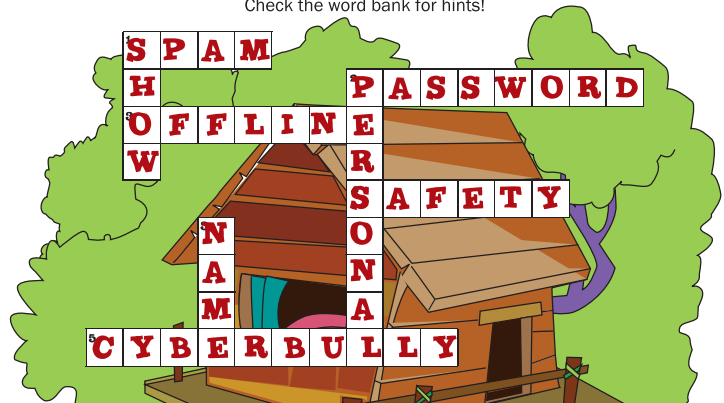
Circle 6 things that are different about the second picture!



Copyright © 2009 National Center for Missing & Exploited Children. All rights reserved.

# NetSmartz Crossword

Complete the crossword by filling in the word that fits each clue. Check the word bank for hints!



### Across

- Unwanted e-mail from someone you don't know, usually trying to sell you something.
- The secret code you use to sign onto a website. Only tell your parent or guardian.
- Meet-Me Mack tries to meet you \_\_\_\_\_.
- My rules for online \_\_\_\_\_.
- Potty-Mouth Pete is a \_\_\_\_\_.

### Down

- Look-At-Dis Louie tries to \_\_\_\_\_ you things you don't want to see.
- Wanta-Know Wally tries to collect your \_\_\_\_\_ information.
- Never give out your \_\_\_\_\_, age, or phone number to others online.

### WORD BANK :

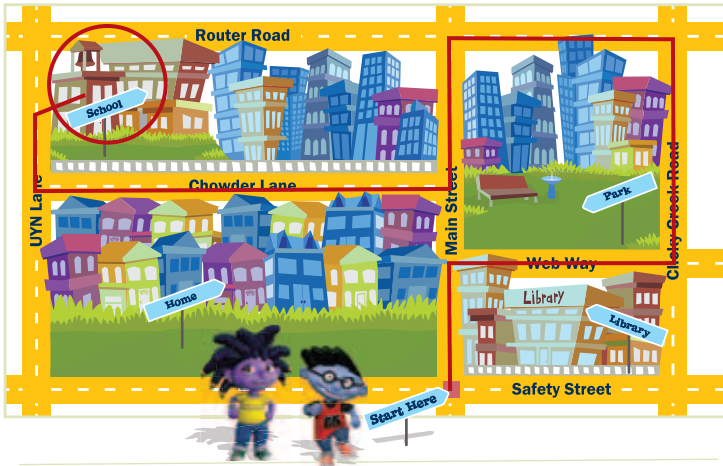
**NAME CYBERBULLY OFFLINE PASSWORD PERSONAL SAFETY SHOW SPAM**

Copyright © 2009 National Center for Missing & Exploited Children. All rights reserved.



# Neighborhood Maze!

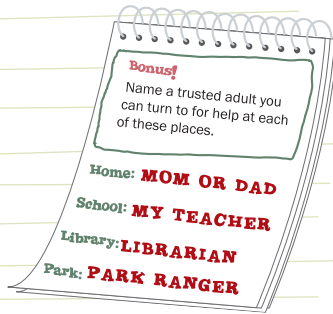
Where are Nettie and Webster going? Follow the directions to find out.



**Directions:**

1. Start out going north on Main Street.
2. Turn east on Web Way.
3. Go north on Clicky Creek Road.
4. Head west on Router Road.
5. Turn south on Main Street.
6. Go west on Chowder Lane.
7. Turn north on UYN Lane. **STOP!**

**Where did Nettie and Webster go?**



Copyright © 2009 National Center for Missing & Exploited Children. All rights reserved.

# NetSmartz Math Decoder

Can you figure out Webster's secret message?  
Solve the math equations to find the letters in the message. Good luck!



2	8	5	1	10
+2	-1	-3	+1	-5
4	7	2	2	5
<u>T</u>	<u>E</u>	<u>L</u>	<u>L</u>	<u>A</u>

8	4	2	6	10	5	3
-4	-3	+1	+4	-6	+2	+3
4	1	1	10	4	7	6
<u>T</u>	<u>R</u>	<u>U</u>	<u>S</u>	<u>T</u>	<u>E</u>	<u>D</u>

6	3	7	8	9
-1	+3	-4	-6	-5
5	6	3	2	4
<u>A</u>	<u>D</u>	<u>U</u>	<u>L</u>	<u>T</u>

R	S	T	E	L	A	D	U
1	10	4	7	2	5	6	3

Copyright © 2009 National Center for Missing & Exploited Children. All rights reserved.

# Nettie's Secret Message

Unscramble the letters to find Nettie's secret message!

When going places or

**P** **L** **A** **Y** **I** **N** **G** outside,  
**L** **G** **A** **I** **Y** **P** **N**

**T** **A** **K** **E** a  
**K** **E** **A** **T**

**F** **R** **I** **E** **N** **D**!  
**N** **F** **D** **E** **I** **R**



Copyright © 2009 National Center for Missing & Exploited Children. All rights reserved.

# Complete the Lyrics!

Can you fill in the blanks to complete the song?  
Use the word bank if you need clues.



**CHECK** FIRST,

TAKE A **FRIEND**

TELL PEOPLE **NO**!

**TELL** A TRUSTED ADULT.

Now you're ready to go!

**WORD BANK :**

GO NO ADULT FRIEND CHECK TELL CHILD FISH

Copyright © 2009 National Center for Missing & Exploited Children. All rights reserved.